

TM 11-6130-243-24P-5

TECHNICAL MANUAL

**ORGANIZATIONAL DIRECT SUPPORT AND
GENERAL SUPPORT MAINTENANCE
REPAIR PARTS AND SPECIAL TOOLS LIST
FOR
POWER SUPPLY PP-4606 E/G
(NSN 6130-00-504-0327)**

**HEADQUARTERS, DEPARTMENT OF THE ARMY
6 SEPTEMBER 1985**

**ORGANIZATIONAL, DIRECT SUPPORT AND GENERAL SUPPORT MAINTENANCE
 REPAIR PARTS AND SPECIAL TOOLS LIST
 FOR
 POWER SUPPLY PP-4606E/G
 (NSN 6130-00-504-0327)
 Current as of 26 March 1985**

REPORTING ERRORS AND RECOMMENDING IMPROVEMENTS

You can help improve this manual. If you find any mistakes or if you know of a way to improve the procedures, please let us know. Mail your letter, DA Form 2028 (Recommended Changes to Publications and Blank Forms), or DA Form 2028-2 located in back of this manual direct to: Commander, US Army Communications - Electronics Command and Fort Monmouth, ATTN: AMSEL-ME-MP, Fort Monmouth, NJ 07703-5007.

In either case, a reply will be furnished direct to you.

Table of Contents

		Page	Illus Figure
SECTION	I. Introduction	1	
	II. Repair Parts List	1-1	
GROUP	00 Power Supply PP-4606E/G	1-1	1
	01 Main Assembly	2-1	2
	0101 Front Panel Assembly	3-1	3
	0102 Circuit Card Assembly	4-1	4
	0103 Rectifier Assembly	5-1	5
	0104 Capacitor Assembly	6-1	6
SECTION	III. Special Tools List(Notapplicable)		
	IV. National Stock Number and Part Number Index	1-1	

SECTION I

INTRODUCTION

1. Scope

This manual lists and authorizes spares and repair parts; special tools; special test, measurement, and diagnostic equipment (TMDE); and other special support equipment required for performance of organizational, direct support, and general support maintenance of the PP-4606E/G. It authorizes the requisitioning, issue, and disposition of spares, repair parts and special tools as indicated by the source, maintenance and recoverability (SMR) codes.

2. General

This Repair Parts and Special Tools List is divided into the following sections:

a. Section II Repair Parts List. A list of spares and repair parts authorized by this RPSTL for use in the absence of maintenance. The list also includes parts which must be removed for replacement of the authorized parts. Parts lists are composed of functional groups in ascending numeric sequence, with the parts in each group listed in ascending item number sequence. Figure numbers are listed directly beneath the group header.

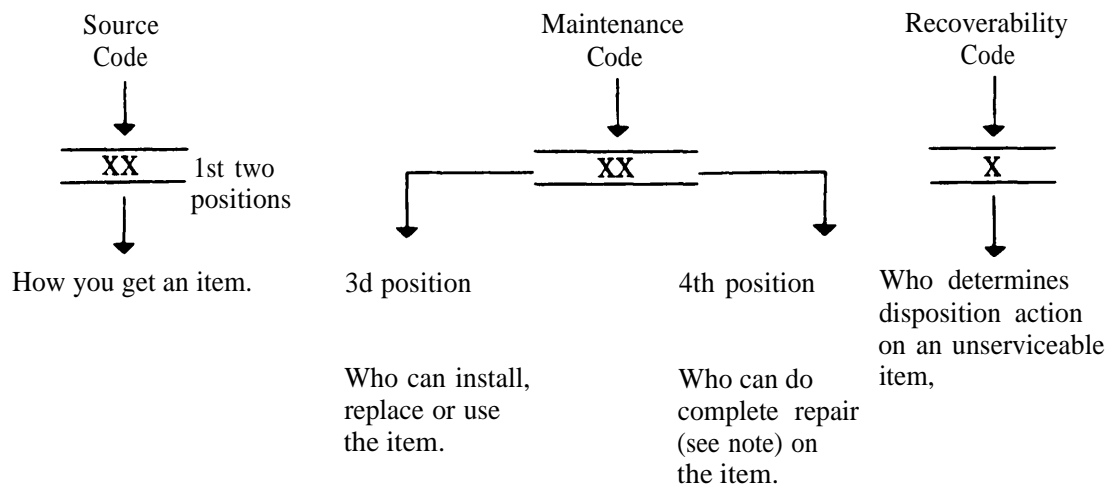
b. Section III. Special Tools List. Not applicable.

c. Section IV. National Stock Number and Part Number Index. A list, in National item identification number (NIIN) sequence, of all National stock numbered items appearing in the listing, followed by a list in alphabetic sequence of all part numbers appearing in the listings. National stock numbers and part numbers are cross-referenced to each illustration figure and item number appearance.

3. Explanation of Columns (Section II and III)

a. Item No. (Column (1)). Indicates the number used to identify items called out in the illustration.

b. SMR Code (Column (2)). The source, maintenance, and recoverability (SMR) code is a five-position code containing supply/requisitioning information, maintenance category authorization criteria, and disposition instruction, as shown in the following breakout:



NOTE

Complete repair: Maintenance capacity, capability, and authority to perform all corrective maintenance tasks of the "Repair" function in a use/user environment in order to restore serviceability to a failed item.

(1) *Source code.* The source code tells you how to get an item needed for maintenance, repair, or overhaul of an end item/equipment. Explanations of source codes follows:

<i>Code</i>	<i>Explanation</i>
PA PB PC PD PE PF PG	Stocked items; use the applicable NSN to request/requisition items with these source codes. They are authorized to the category indicated by the code entered in the third position of the SMR code. <p style="text-align: center;">NOTE Items coded PC are subject to deterioration.</p>
KD KF KB	Items with these codes are not to be requested/requisitioned individually. They are part of a kit which is authorized to the maintenance category indicated in the third position of the SMR code. The complete kit must be requisitioned and applied.

MO-Made at org/AVUM category MF-Made at DS/AVUM category MH-Made at GS category ML-Made at Specialized Repair Activity (SRA) MD-Made Depot	Items with these codes are not to be requested/requisitioned individually. be made from bulk material which is identified by the part o description and usable on code (UOC) column and listed in the L. erial group of the repair parts list. If the item is authorized to you by one third position code of the SMR code, but the source code indicates it is made at a higher category, order the item from the higher category of maintenance.
AO-Assembled by org/AVUM category AF-Assembled by DS/AVIM category AH-Assembled by GS category AL-Assembled by SRA AD-Assembled by Depot	Items with these codes are not to be requested/requisitioned individually. The parts that make up the assembled item must be requisitioned or fabricated and assembled at the category of maintenance indicated by the source code. If the disposition code of the SMR code authorizes you to replace the item, but the source code indicates the item is assembled at a higher category, order the item from the higher category of maintenance.

<i>Code</i>	<i>Explanation</i>
XA	Do not requisition an "XA" coded item. Order its next higher assembly.
XB	If an "XB" item is not available from salvage, order it using the FSCM and part number given.
XC	Installation drawing, diagram, instruction sheet, field service drawing, that is identified by manufacturers part number.
XD	Item is not staked. Order an "XD" coded item through normal supply channels using the FSCM and part number given, if no NSN is available.

NOTE

Cannibalization or controlled exchange, when authorized, may be used as a source of supply for items with the above source codes, except for those source coded "XA" or those aircraft support items restricted by requirements of AR 750-1.

(2) *Maintenance code.* Maintenance codes tell you the category of maintenance authorized to USE and REPAIR support items. The maintenance codes are entered in the third and fourth positions of the SMR code as follows:

(a) The maintenance code entered in the third position tells you the lowest maintenance category authorized

to remove, replace, and use an item. The maintenance code entered in the third position will indicate authorization to one of the following categories of maintenance.

<i>Code</i>	<i>Application/Explanation</i>
C	Crew or operator maintenance done within organizational <i>or</i> aviation maintenance.
O	Organizational or aviation unit category can remove, replace, and use the item.
F	Direct support or aviation intermediate category can remove, replace, and use the item.
H	General support category can remove, replace, and use the item.
L	Specialized repair activity can remove, replace, and use the item.
D	Depot category can remove, replace, and use the item.

(b) The maintenance code entered in the fourth position tells whether or not the item is to be repaired and identifies the lowest maintenance category with the capability to do complete repair (i.e., perform all authorized repair functions). This position will contain one of the following maintenance codes.

NOTE

Some limited repair may be done on the item at a lower category of maintenance, if authorized by the Maintenance Allocation Chart (MAC) and SMR codes.

<i>Code</i>	<i>Application/Explanation</i>
O	Organizational or aviation unit category that can do complete repair of the item.
F	Direct support or aviation intermediated the lowest category that can do complete repair of the item.
H	General support is the lowest category that can do complete repair of the item.
L	Specialized repair activity (designate the specialized repair activity) is the lowest category that can do complete repair of the item.
D	Depot is the lowest category that can do complete repair of the item.
Z	Nonreparable. No repair is authorized.
B	No repair is authorized. (No parts or special tools are authorized for the maintenance of a "B" coded item). However, the item may be reconditioned by adjusting, lubricating, etc., at the user category.

(3) Recoverability code. Recoverability codes are assigned to items to indicate the disposition action on unserviceable items. The recoverability code is entered in the fifth position of the SMR Code as follows:

<i>Recoverability codes</i>	<i>Application/Explanation</i>
Z	Nonreparable Item. When unserviceable, condemn and dispose of the item at the category of maintenance shown in the third position of SMR Code.
O	Reparable item. When uneconomically repairable, condemn and dispose of the item at organizational or aviation unit category.
F	Reparable item. When uneconomically repairable, condemn and dispose of the item at direct support or aviation intermediate category.
H	Reparable item. When uneconomically repairable, condemn and dispose of the item at general support category.
D	Reparable item. When beyond lower category repair capability, return to depot. Condemnation and disposal of item not authorized below depot category.
L	Reparable item. Condemnation and disposal not authorized below specialized repair activity (SRA).
A	Item requires special handling or condemnation procedures because of specific reasons (e.g., precious metal content, high dollar value, critical material, or hazardous material). Refer to appropriate manuals/directives for specific instructions.

c. *FSCM (Column (3))*. The Federal Supply Code for Manufacturer (FSCM) is a 5digit numeric code which is used to identify the manufacturer, distributor, or Government agency, etc., that supplies the item.

d. *Part Number (Column (4))*. Indicates the primary number used by the manufacturer (individual, company, firm, corporation, or Government activity), which controls the design and characteristics of the item by means of its engineering drawings, specifications, standards, and inspection requirements to identify an item or range of items.

NOTE

When you use a NSN to requisition an item, the item you receive may have a different part number from the part ordered.

e. *Description and Usable on Code (UOC) (Column (5))*. This column includes the following information.

(1) The Federal item name and, when required, a minimum description to identify the item.

(2) The statement "END OF FIGURE" appears just below the last item description in Column (5) for a given figure in both section II and section III.

f. *Qty (Column (6))*. Indicates the quantity of the item used in the breakout shown on the illustration figure,

which is prepared for a functional group, subfunctional group, or an assembly. A “V” appearing in this column in lieu of a quantity indicates that the quantity is variable and the quantity may vary from application to application.

4. Explanation of Columns (Section IV)

a. National Stock Number (NSN) Index.

(1) *Stock number column.* This column lists the NSN by National item identification number (NIIN) sequence. The NIIN consists of the last nine digits of the NSN. When using this column to locate an item, ignore the first four digits of the NSN. When requisitioning items use the complete NSN (13 digits).

(2) *Fig. column.* This column lists the number of the figure where the item is identified/located. The illustrations are in numerical sequence in sections II and III.

(3) *Item column.* The item number identifies the item associated with the figure listed in the adjacent Fig. column. This item is also identified by the NSN listed on the same line.

b. Part Number Index. Part numbers in this index are listed by part number in ascending alphameric sequence.

(1) *FSCM column.* This column lists the Federal supply code for manufacturer (FSCM).

(2) *Part number column.* This column indicates the part number assigned to the item.

(3) *Stock number column.* This column has the National stock number for the associated part number and manufacturer identified in the part number columns to the left.

(4) *Fig. column.* This column lists the figure where the item is identified/located in sections II and III.

(5) *Item column.* The item number is that number assigned to the item as it appears, in the figure referenced in the adjacent figure number column.

5. Special Information

a. *Associated Publications.* The publication listed below pertains to the PP-4606E/G and its components:
TM 11-6130-243-14-5, Power Supply PP-4606E/G

b. *National Stock Numbers.* National stock numbers (NSN's) that are missing from P source coded items have been applied for and will be added to this TM by future change/revision when they are entered in the Army Master Data File (AMDF). Until the NSN's are established and published, submit exception requisitions to: Commander, US Army Communications-Electronics Command and Fort Monmouth, ATTN: AMSEL-MM, Fort Monmouth, NJ 07703-5006 for the part required to support your equipment.

6. How to Locate Repair Parts

a. When National stock number or part number is not known.

(1) *First.* Using the table of contents, determine the assembly group or subassembly group to which the item belongs. This is necessary since figures are prepared for assembly groups and subassembly groups, and listings are divided into the same groups.

(2) *Second.* Find the figure covering the assembly group or subassembly group to which the item belongs.

(3) *Third.* Identify the item on the figure and note the item number.

(4) *Fourth.* Refer to the Repair Parts List for the figure to find the part number for the item number noted on the figure.

(5) *Fifth.* Refer to the Part Number Index to find the NSN, if assigned.

b. When National stock number or part number is known.

(1) *First.* Using the index of National stock numbers and part numbers, find the pertinent National stock number or part number. The NSN index is in National item identification number (NIIN) sequence (para 4a(1)). The part numbers in the part number index are listed in ascending alphameric sequence (para 4b). Both indexes cross-reference you to the illustration figure and item number of the item you are looking for.

(2) *Second.* After finding the figure and item number, verify that the item is the one you're looking for, then locate the item number in the repair parts list for the figure.

7. Abbreviations

Not applicable.

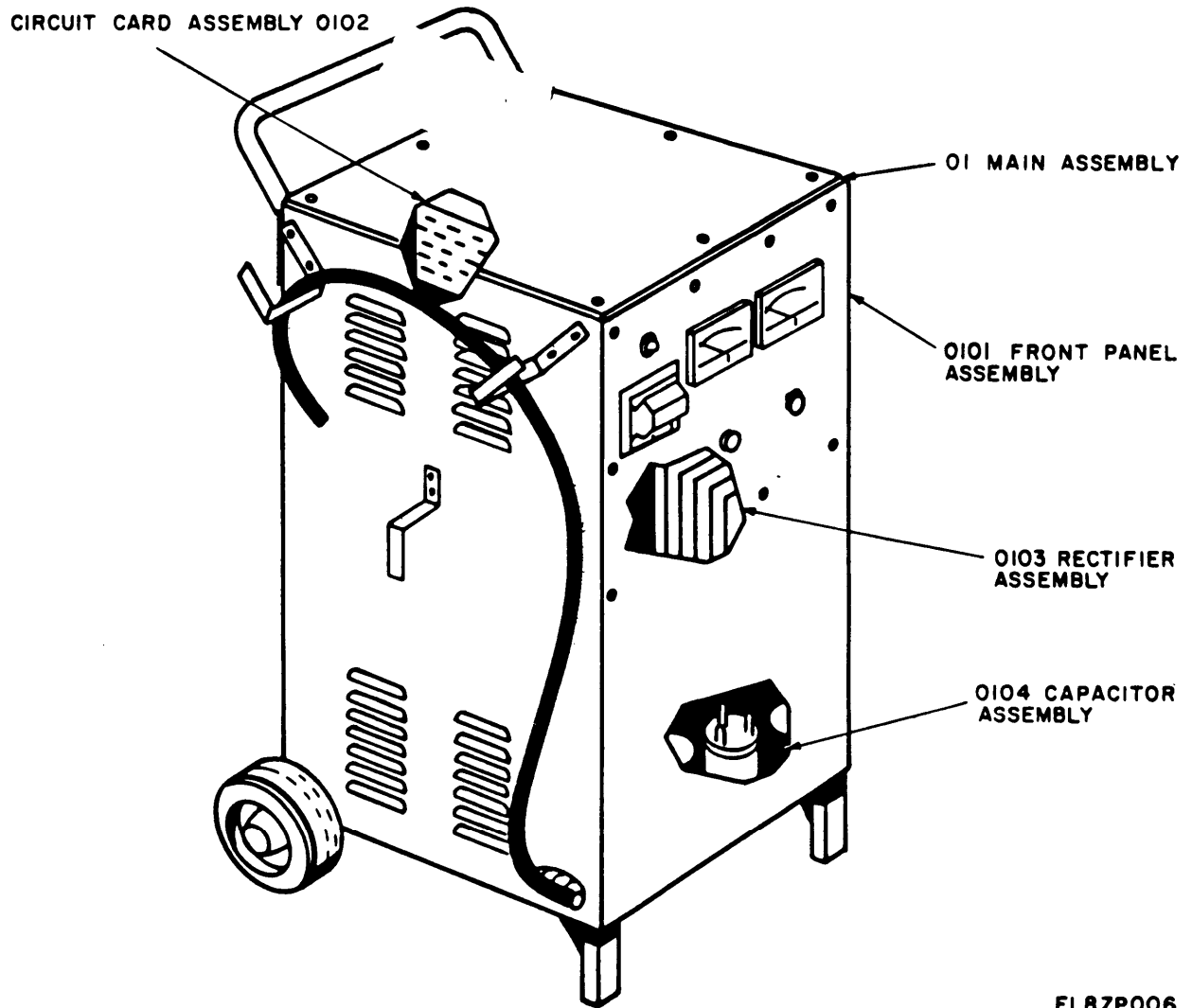
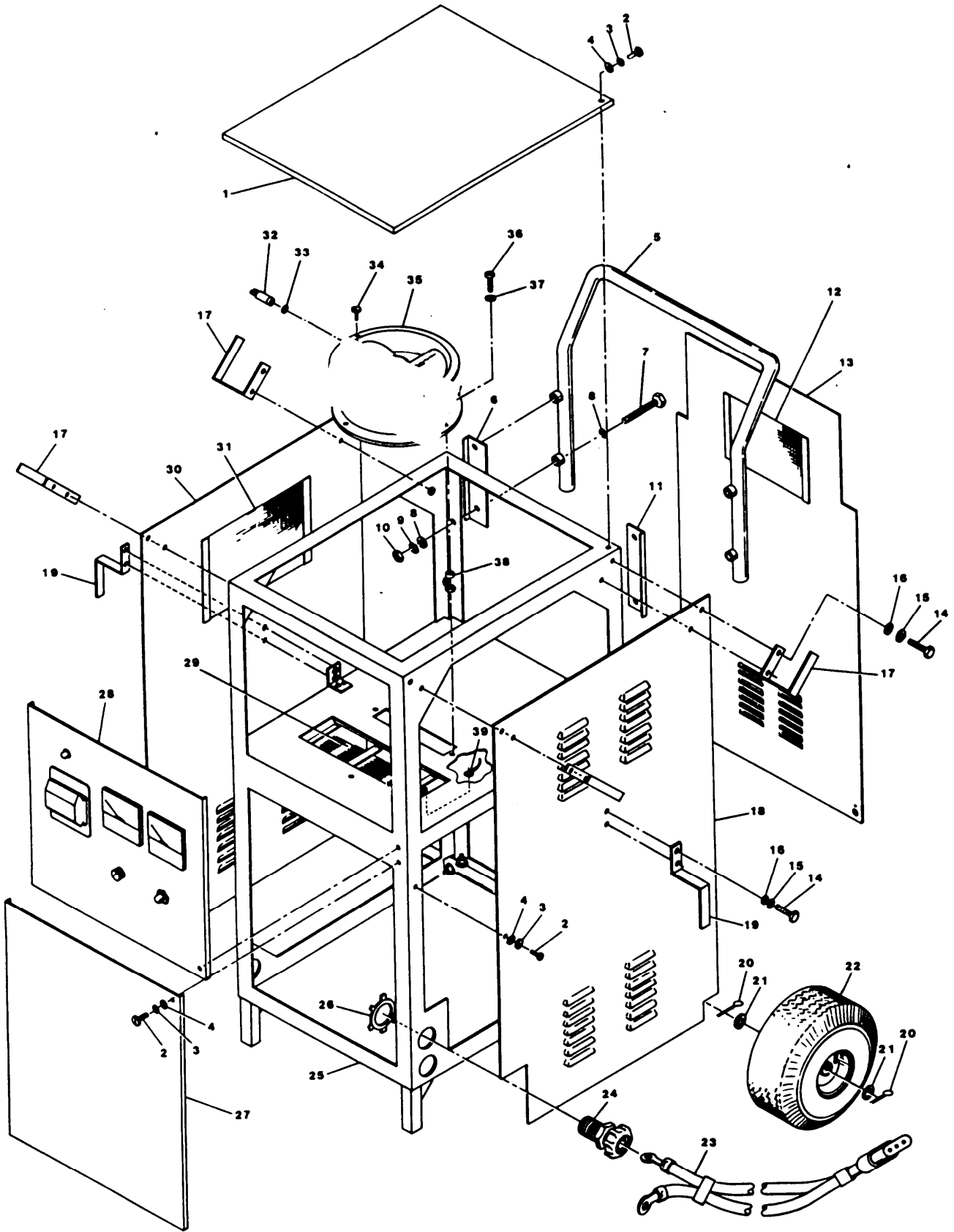


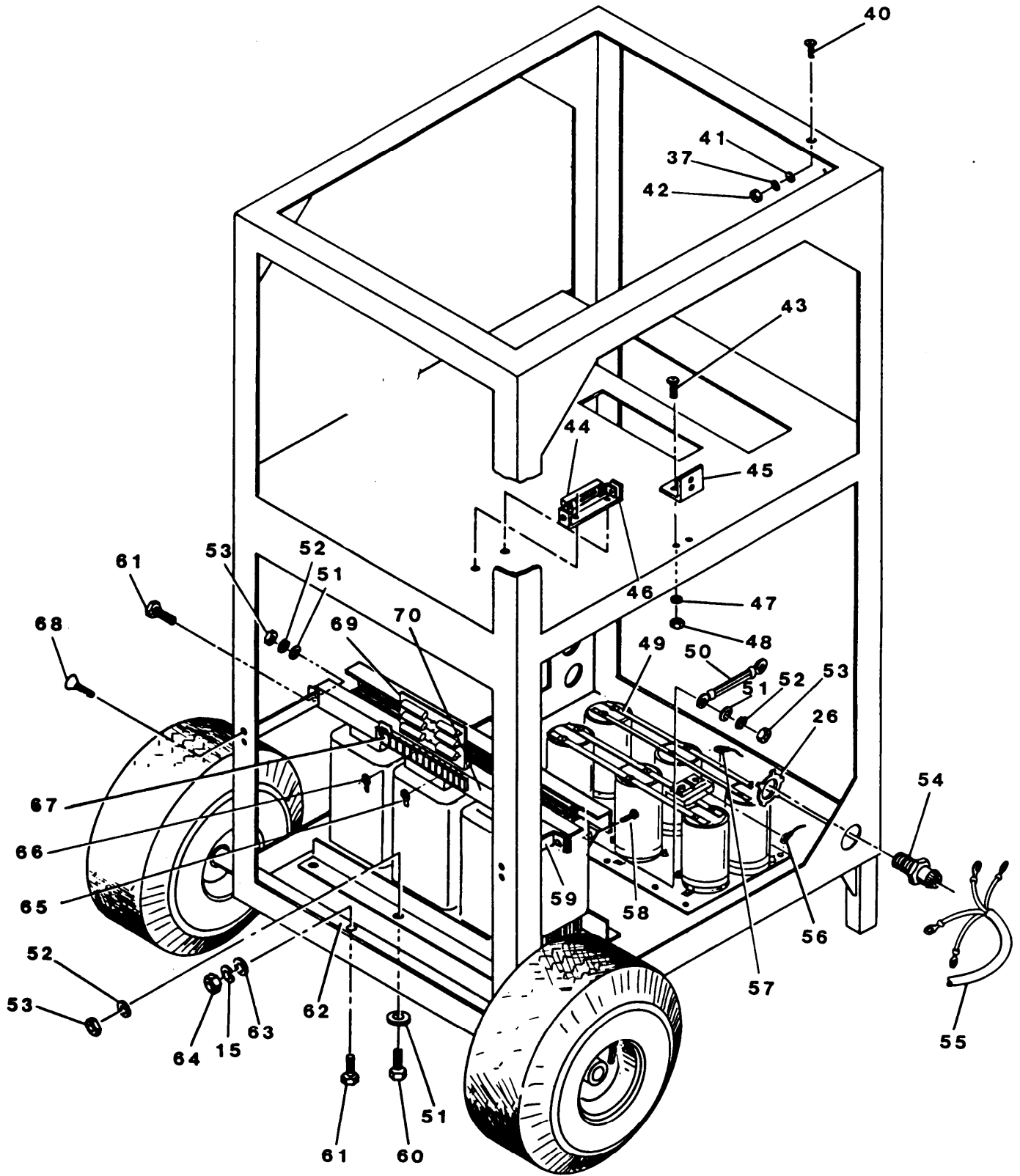
Figure 1. Power Supply PP-4606E/G

SECTION II				TM11-6130-243-24P-5	
(1)	(2)	(3)	(4)	(5)	(6)
ITEM	SMR		PART		
NO	CODE	FSCM	NUMBER	DESCRIPTION AND USABLE ON CODE (UOC)	QTY
				GROUP 00 POWER SUPPLY PP4606E/G	
				FIG 1	
1	XBFFF	25778	204959	MAIN ASSEMBLY	1
2	PAOFF	25778	103600	FRONT PANEL ASSY	1
3	PAFHH	25778	102895	CIRCUIT CARD ASSY	1
4	XBFFF	25778	102978	RECTIFIER ASSY	1
5	XBFFF	25779	102979	CAPACITOR ASSY	1
				END OF FIGURE	



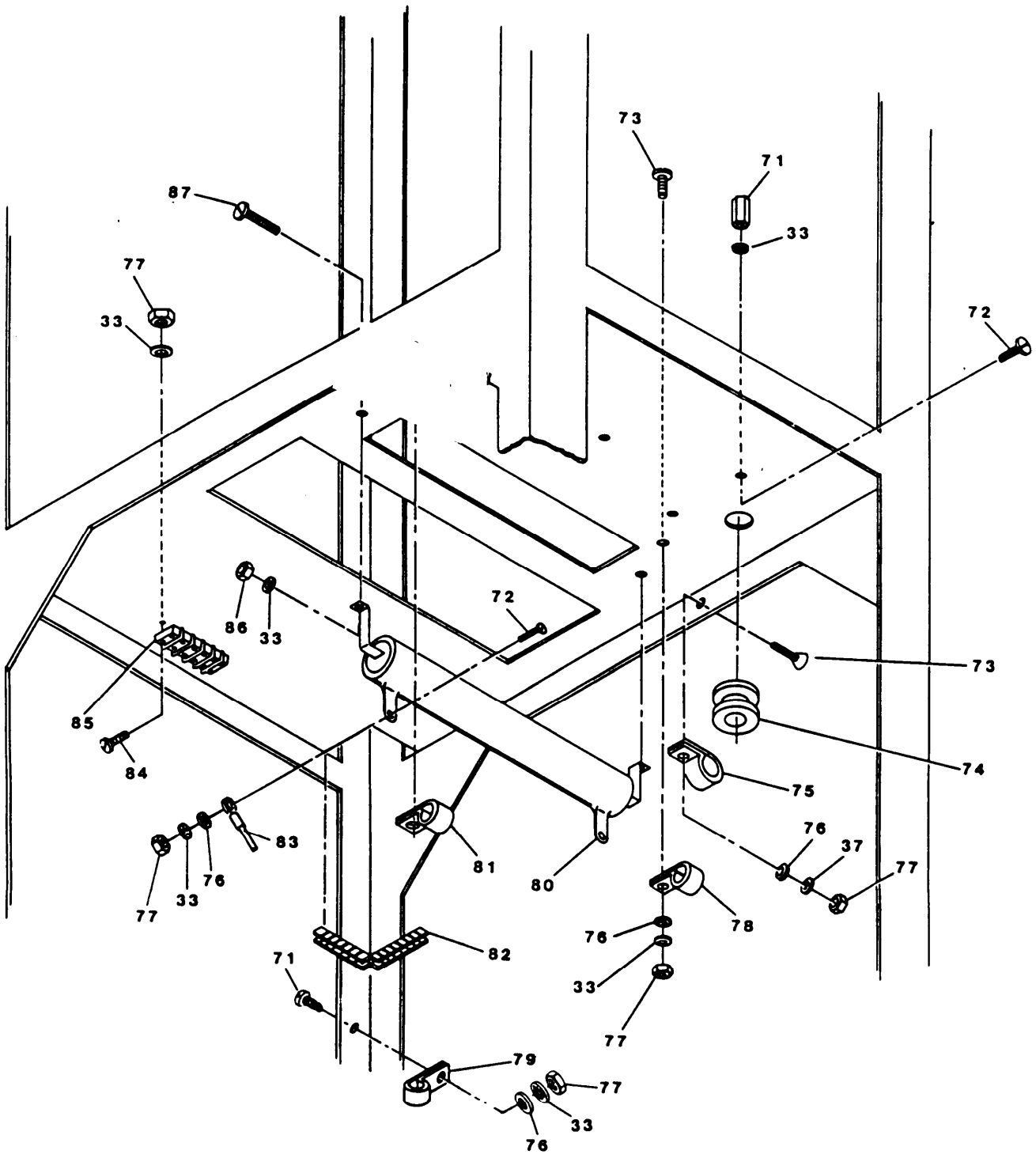
EL8ZP001

Figure 2. Main Frame Assembly (Sheet 1 of 5)



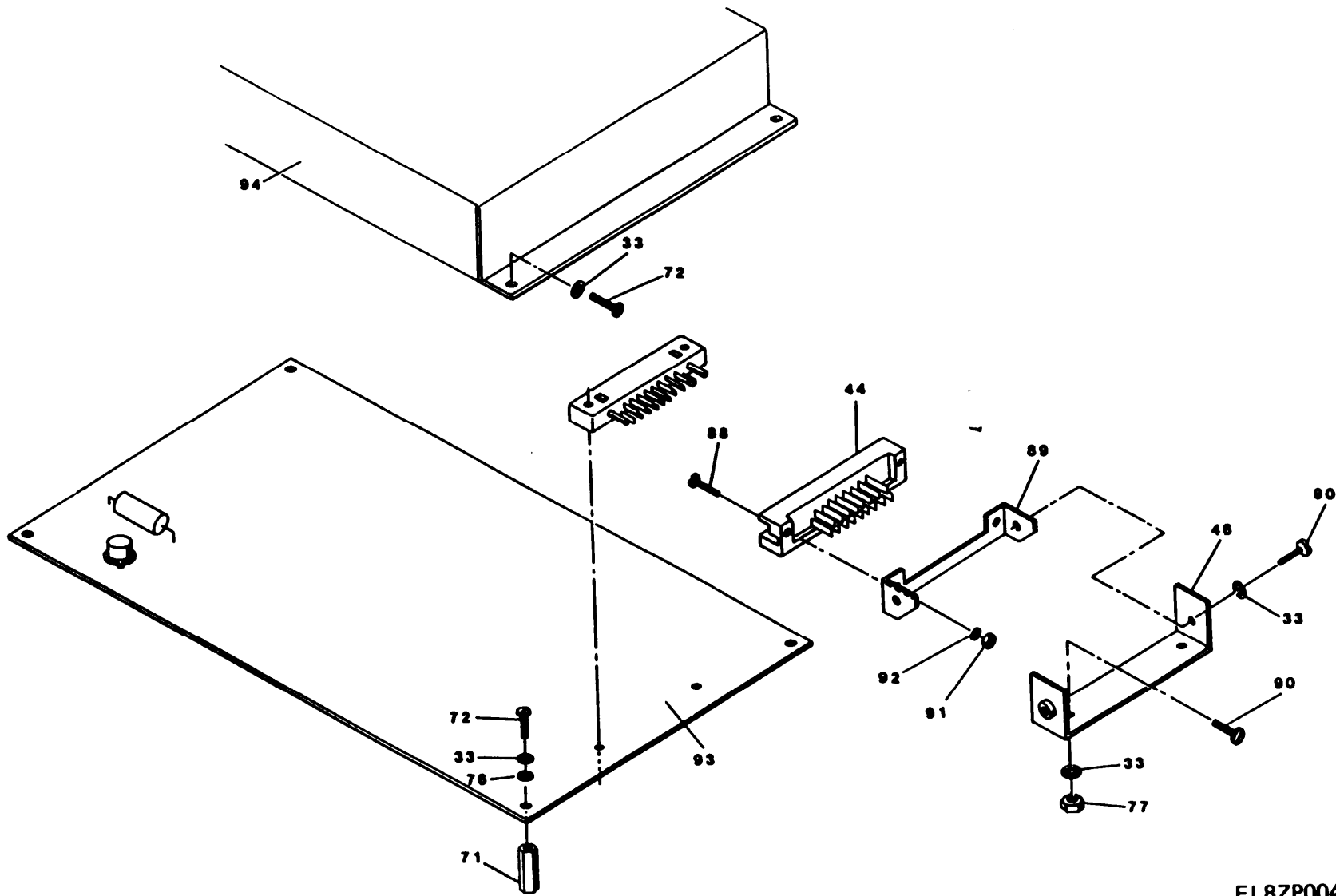
EL8ZP002

Figure 2. Main Frame Assembly (Sheet 2 of 5)



EL8ZP003

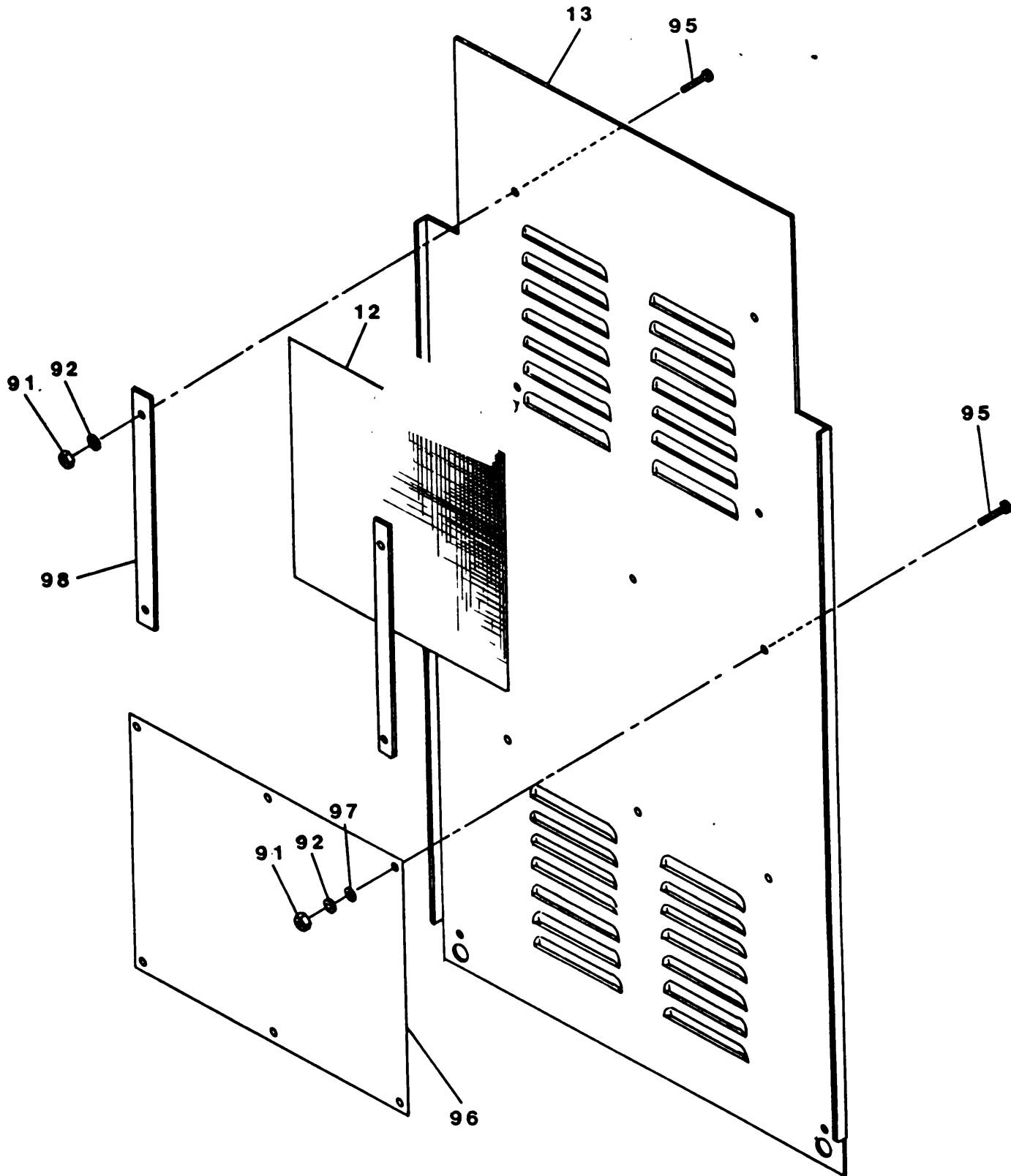
Figure 2. Main Frame Assembly (Sheet 3 of 5)



TM 11-6130-243-24P-5

EL8ZP004

Figure 2. Main Frame Assembly (Sheet 4 of 5)



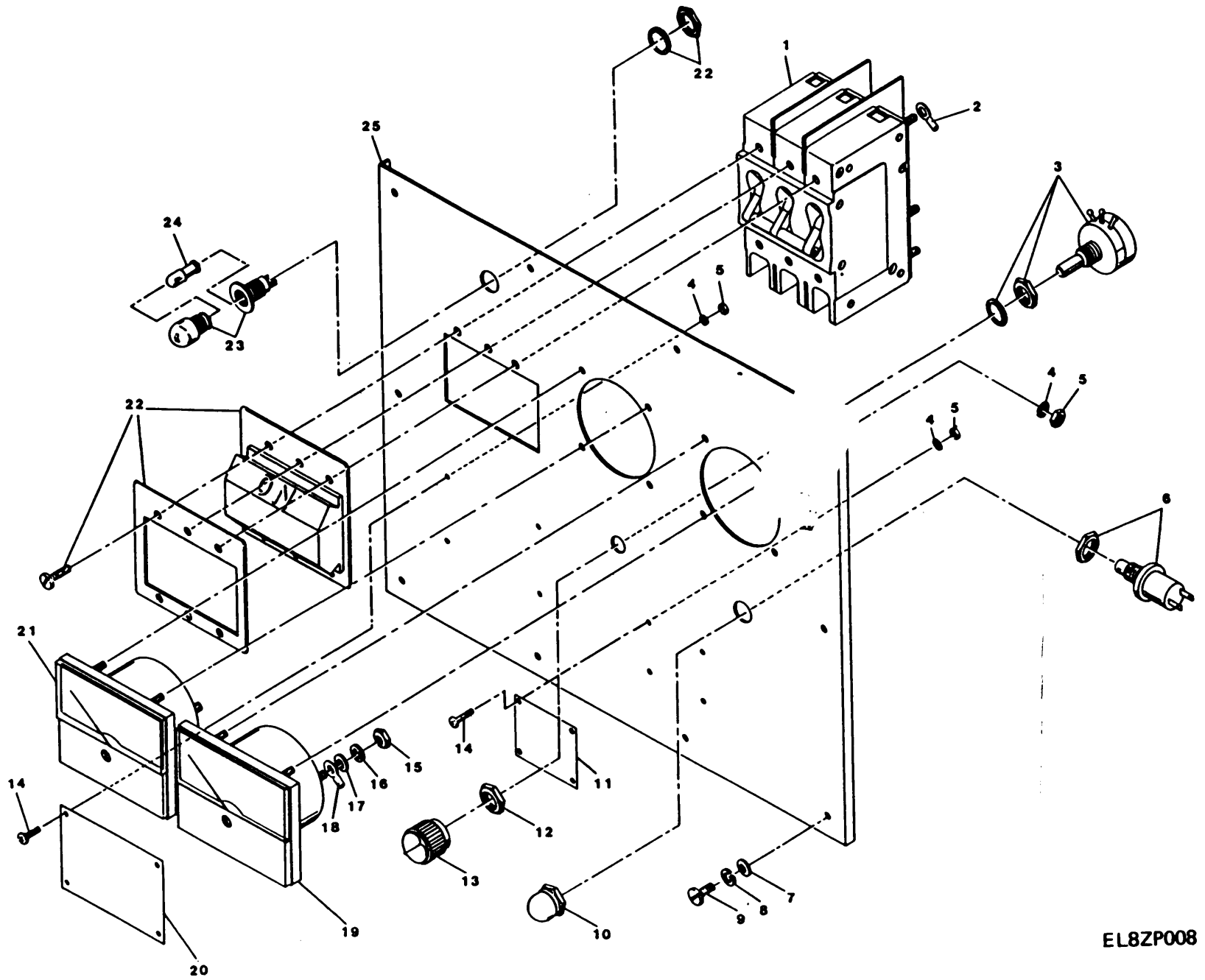
EL8ZP005

Figure 2. Main Frame Assembly (Sheet 5 of 5)

SECTION II		TM11-6130-243-24P-5			
(1)	(2)	(3)	(4)	(5)	(6)
ITEM NO	SMR CODE	FSCM	PART NUMBER	DESCRIPTION AND USABLE ON CODE (UOC)	QTY
GROUP 01 MAIN ASSEMBLY					
FIG 2					
1	XBFZZ	25778	204960	TOP COVER	1
2	PAFZZ	96906	MS51957-44	SCREW, MACHINE	81
3	PAFZZ	96906	MS35338-137	WASHER, LOCK	81
4	PAFZZ	96906	MS15795-807	WASHER, FLAT	91
5	XBFZZ	25778	204948	HANDLE	1
6	XBFZZ	25778	204973	GAP FILLER RIGHT	1
7	PAFZZ	96906	MS35307-368	SCREW, CAP, HEXAGON H	4
8	PAFZZ	96906	AN960-C616	WASHER, FLAT	8
9	PAFZZ	96906	MS35338-46	WASHER, LOCK	4
10	PAFZZ	96906	MS51967-8	NUT, PLAIN, HEXAGON	4
11	XBFZZ	25778	204974	GAP FILLER LEFT	1
12	XBFZZ	25778	205001	SCREEN	1
13	XBFZZ	25778	204962	REAR COVER	1
14	PAFZZ	96906	MS35307-306	SCREW, CAP, HEXAGON H	6
15	PAFZZ	96906	MS35337-139	WASHER, LOCK	17
16	PAFZZ	96906	AN960-C416L	WASHER, FLAT	12
17	XBFZZ	25778	204952	CABLE BRACKET	4
18	XNFZZ	25778	204964	RIGHT SIDE COVER	1
19	XBFZZ	25778	204954	CABLE BRACKET	2
20	XBFZZ	25778	364528	PIN, COTTER	4
21	XBFZZ	25778	364527	WASHER, FLAT	4
22	XBFZZ	25778	204913	WHEEL	2
23	PAFZZ	96906	MS90347-13	OUTPUT CABLE	1
24	PAFZZ	59730	2547	STRAIN, RELIEF	1
25	XBFZZ	25778	204959	MAIN ASSEMBLY	1
26	XBFZZ	59730	153	NUT FOR CABLE CLAMP	3
27	PAFZZ	25778	204966	FRONT COVER	1
28	PAOFF	25778	103600	FRONT PANEL ASSY	1
29	XBFFF	25778	102978	RECTIFIER ASSY	1
30	XBFZZ	25778	204963	LEFT SIDE COVER	1
31	XBFZZ	25778	205002	SCREEN	2
32	PAFZZ	81312	776	STANDOFF INSULATED	1
33	PAFZZ	96906	MS35333-37	WASHER, LOCK	27
34	PAFZZ	96906	MS35223-25	SCREW, MACHINE	2
35	XBFZZ	82877	CL3L2	FAN	1
36	PAFZZ	96906	MS35206-246	SCREW, MACHINE	3
37	PAFZZ	96906	MS35333-38	WASHER, LOCK	3
38	XBFZZ	95987	NSO-28	SPACER INSULATED	3
39	XBFZZ	09922	SD14-6	TERMINAL LUG	2
40	PAFZZ	96906	MS35190-254	SCREW, MACHINE	6
41	PAFZZ	96906	MS27183-7	WASHER, FLAT	6
42	PAFZZ	96906	MS35649-282	NUT, PLAIN, HEXAGON	6
43	PAFZZ	96906	MS35224-63	SCREW, MACHINE	4
44	XBFZZ	31781	00-7024-017-1630	CONNECTOR	1
45	XBFZZ	25778	204953	CABLE BKT SPT PLATE	2
46	XBFZZ	25778	204957	HINGE BRACKET	1
47	PAFZZ	96906	MS35333-39	WASHER, LOCK	4
48	PAFZZ	97539	N9030X1/4	ROTARY SHAFT SEAL	1

SECTION II				TM11-6130-243-24P-5	
(1)	(2)	(3)	(4)	(5)	(6)
ITEM	SMR		PART		
NO	CODE	FSCM	NUMBER	DESCRIPTION AND USABLE ON CODE (UOC)	QTY
49	XBFFF	25778	102979	CAPACITOR ASSEMBLY	1
50	XBFZZ	25778	102976	JUMPER STRAP ASSY	3
51	PAFZZ	96906	AN960-C616	WASHER, FLAT	11
52	PAFZZ	96906	MS35338-46	WASHER, LOCK	2
53	PAFZZ	96906	MS51967-8	NUT, PLAIN, HEXAGON	2
54	PAFZZ	15235	CGB396	STRAIN, RELIEF	1
55	XBFZZ	76154	M2784	LINE CORD	1
56	XBFZZ	09922	YAE18NI	TERMINAL RING TNG	3
57	XBFZZ	82260	6-6	LUG TERMINAL	6
58	PAFZZ	96906	MS35291-59	SCREW, CAP, HEXAGON H	3
59	XBFZZ	25778	204949	XFMR SUPPORT BKT	2
60	PAFZZ	96906	MS35307-360	SCREW, CAP, HEXAGON H	2
61	PAFZZ	96906	MS35233-86	SCREW, MACHINE	5
62	XBFZZ	25778	204955	AXLE	1
63	PAFZZ	96906	AN960-C416L	WASHER, FLAT	5
64	PAFZZ	96906	MS51967-1	NUT, PLAIN, HEXAGON	5
65	XBFZZ	09922	SE18N21	TERMINAL LUG	15
66	XBFZZ	09922	SE12G10	TERMINAL LUG	6
67	XBFZZ	06947	141J-1	JUMPER STRIP	6
68	PAFZZ	96906	MS35190-253	SCREW, MACHINE	4
69	PAFZZ	25778	103560	CAPICATOR BD ASSY	1
70	XBFZZ	25778	351287	TRANSFORMER	1
71	PAHZZ	8330	2321	SPACER THREADED	1
72	PAFZZ	96906	MS35223-27	SCREW, MACHINE	16
73	PAFZZ	96906	MS-35206-231	SCREW, MACHINE	3
74	PAFZZ	66717	95900	GOMMET, NONMETALLIC	1
75	XBFZZ	83330	8946	CLAMP, CABLE	2
76	PAFZZ	96906	MS27183-5	WASHER, FLAT	2
77	PAFZZ	96906	MS35649-262	NUT, PLAIN, HEXAGON	2
78	XBFZZ	8330	8942	CLAMP, LOOP	4
79	PAHZZ	83330	8942	CABLE CLAMP	1
80	XBFZZ	44655	270225P465R000J	RESISTOR	1
81	PAHZZ	83330	8941	CABLE CLAMP	1
82	PAFZZ	83330	2694	GROMMET, NONMETALLIC	1
83	XBFZZ	09922	SD14-14	TERMINAL LUG	2
84	PAFZZ	96906	MS35206-232	SCREW, MACHINE	2
85	XBFZZ	75382	601-4	TERMINAL BOARD	1
86	PAFZZ	96906	MS35650-302	NUT, PALIN, HEXAGON	2
87	PAFZZ	96906	MS35207-261	SCREW, MACHINE	2
88	PAFZZ	96906	MS51957-18	SCREW, MACHINE	2
89	XBFZZ	25778	204956	CONNECTOR BRACKET	1
90	PAFZZ	96906	MS35223-28	SCREW, MACHINE	4
91	PAFZZ	96906	MS35649-242	NUT, PLAIN, HEXAGON	6
92	PAFZZ	96906	MS35333-36	WASHER, LOCK	6
93	PAFHH	25778	102895	CIRCUIT CARD ASSEMB	1
94	XBFZZ	25778	204958	PWB COVER	1
95	PAFZZ	96906	MS51957-14	SCREW, MACHINE	6
96	XBFZZ	25778	205115	SCHEMATIC LAMINATED	1
97	PAFZZ	96906	MS27183-4	WASHER, FLAT	6
98	XBFZZ	25778	205003	CLAMP PLATE	6

END OF FIGURE



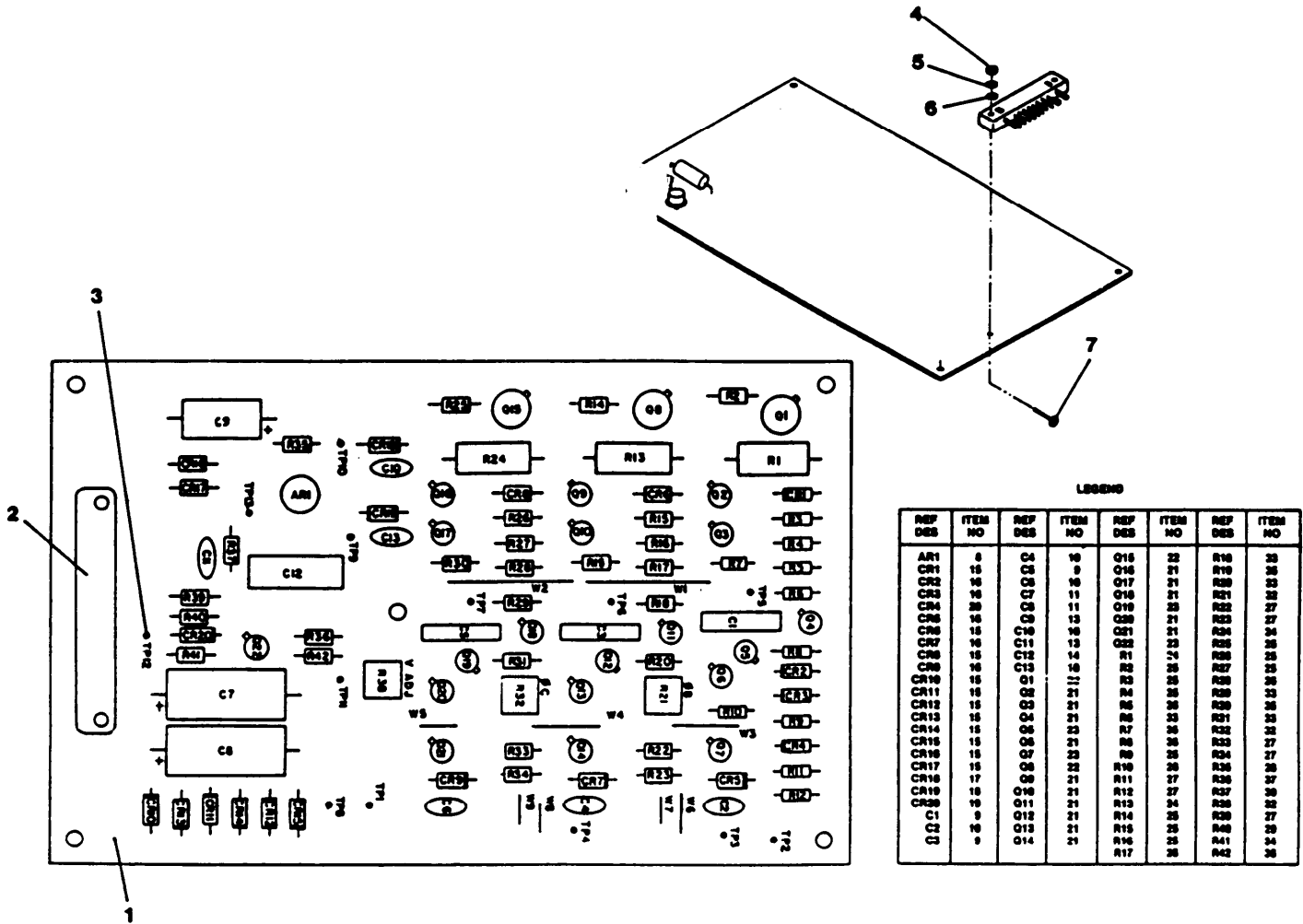
TM 11-6130-243-24P-5

EL8ZP008

Figure 3. Front Panel Assembly

SECTION II		TM11-6130-243-24P-5			
(1)	(2)	(3)	(4)	(5)	(6)
ITEM NO	SMR CODE	FSCM	PART NUMBER	DESCRIPTION AND USABLE ON CODE (UOC)	QTY
GROUP 0101 FRONT PANEL ASSEMBLY					
FIG 3					
1	XBFZZ	81541	299-3-8950-1	CIRCUIT BREAKER	1
2	PAFZZ	96906	MS25036-112	TERMINAL, LUG	10
3	PAFZZ	81349	RV4NAYS502A	RESISTOR, VARIABLE, N	1
4	PAFZZ	96906	MS35333-36	WASHER, FLAT	18
5	PAFZZ	96906	MS35649-242	NUT, PLAIN, HEXAGON	36
6	PAFZZ	18876	9062759	SWITCH, PUSH	1
7	PAFZZ	80205	NAS620-10L	WASHER, FLAT	4
8	PAFZZ	96906	MS35338-46	WASHER, LOCK	9
9	PAFZZ	96906	MS35190-254	SCREW, MACHINE	1
10	PAFZZ	81349	MS423-07-01	BOOT, DUST AND MOIST	1
11	XBFZZ	25778	205006	NAMEPLATE	1
12	PAHZZ	97539	N903X 1/4	ROTARY SHAFT SEAL	1
13	PAOZZ	96906	MS91528-2D2B	KNOW	1
14	PAFZZ	96906	MS51957-13	SCREW, MACHINE	21
15	PAHZZ	96906	MS35650-302	NUT, PLAIN, HEX	1
16	PAHZZ	96906	MS35333-39	WASHER, LOCK	1
17	PAHZZ	80205	NAS620-10L	WASHER, FLAT	1
18	PAHZZ	09922	SE22G15	TERMINAL LUG	1
19	PAHZZ	32171	K3S-DAA-300	METER	1
20	XBFZZ	25778	205122	INSTRUCTION PLATE	1
21	XBFZZ	32171	K3S-DVV-040	METER	1
22	PAHZZ	97539	HE-1070	CKT BREAKER BOOT	1
23	XBFZZ	72619	162-8430-0932-50	LAMPHOLDER	1
24	XBFZZ	25778	361286	LAMP	1
25	PAHZZ	25778	204961	FRONT COVER UPPER	1

END OF FIGURE



LEGEND

REF DES	ITEM NO	REF DES	ITEM NO	REF DES	ITEM NO	REF DES	ITEM NO
AR1	8	CR4	9	Q15	22	R16	35
CR1	15	CR5	10	Q16	21	R17	36
CR2	16	CR6	11	Q17	21	R18	36
CR3	16	CR7	11	Q18	21	R19	36
CR4	16	CR8	13	Q19	21	R20	36
CR5	16	CR9	13	Q20	21	R21	36
CR6	16	CR10	13	Q21	21	R22	36
CR7	16	CR11	13	Q22	21	R23	36
CR8	16	CR12	13	R1	24	R24	36
CR9	16	CR13	14	R2	25	R25	36
CR10	16	CR14	16	R3	25	R26	36
CR11	15	CR15	17	R4	25	R27	36
CR12	15	CR16	17	R5	25	R28	36
CR13	15	CR17	17	R6	25	R29	36
CR14	15	CR18	17	R7	25	R30	36
CR15	15	CR19	17	R8	25	R31	36
CR16	15	CR20	17	R9	25	R32	36
CR17	15	C1	9	R10	26	R33	36
CR18	15	C2	9	R11	27	R34	36
CR19	15	Q10	21	R12	27	R35	36
CR20	15	Q11	21	R13	27	R36	36
C1	9	Q12	21	R14	27	R37	36
C2	9	Q13	21	R15	27	R38	36
		Q14	21	R16	28	R39	36
				R17	28	R40	36

EL8ZP009

Figure 4. Circuit Card Assembly

SECTION II		TM11-6130-243-24P-5			
(1)	(2)	(3)	(4)	(5)	(6)
ITEM NO	SMR CODE	FSCM	PART NUMBER	DESCRIPTION AND USABLE ON CODE (UOC)	QTY
GROUP 0102 CIRCUIT CARD ASSEMBLY					
FIG 4					
1	XBFZZ	25778	204980	PWB	1
2	PAFZZ	80058	UG-625 B/U	CONNECTOR, RECEPTACL	1
3	PAHZZ	00779	60789-2	TERMINAL	1
4	PAFZZ	96906	MS35649-242	NUT, PLAIN, HEXAGON	2
5	PAFZZ	96906	MS35333-36	WASHER, LOCK	2
6	PAFZZ	96906	MS27183-4	WASHER, FLAT	2
7	PAFZZ	96906	MS51957-18	SCREW, MACHINE	2
8	XBFZZ	27014	LM741	MICROCKT LINEAR	1
9	XBFZZ	24138	PMG224K251	CAP FXD FILM	3
10	PAFZZ	24138	CD104Z500	CAPACITOR, FIXED, CER	5
11	XBFZZ	24138	TDA470M25T	CAP FXD ELCTLT	2
12	XBFZZ	24138	TDA100M25T	CAP FXD ELCTLT	1
13	XBFZZ	24138	EM103K101	CAP FXD FILM	1
14	XBFZZ	24138	PMG474K251	CAP FXD FILM	1
15	PAFZZ	81349	JAN1N5611	SEMICONDUCTOR DEVIC	11
16	PAFZZ	81349	JAN1N4148-1	SEMICONDUCTOR DEVIC	5
17	PAFZZ	81349	JAN1N963B	SEMICONDUCTOR DEVIC	1
18	PAFZZ	81349	1N961B	SEMICONDUCTOR, DEVIC	1
19	PAFZZ	81349	JAN1N821	SEMICONDUCTOR DEVIC	1
20	PAFZZ	81349	JAN1N753A	SEMICONDUCTOR DEVIC	1
21	PAFZZ	81349	JAN2N2222	TRANSISTOR	15
22	PAFZZ	81349	JAN2N2219A	TRANSISTOR	3
23	PAFZZ	81349	JAN2N2907A	TRANSISTOR	4
24	PAFZZ	81349	RC42GF680J	RESISTOR, FIXED, COMP	3
25	PAFZZ	81349	RC07GF102J	RESISTOR, FIXED, COMP	10
26	PAFZZ	81349	RCR07G222JS	RESISTOR, FIXED, COMP	3
27	PAFZZ	81349	RCR07G472JS	RESISTOR, FIXED, COMP	7
28	PAFZZ	81349	RCR07G561JS	RESISTOR, FIXED, COMP	2
29	PAFZZ	81349	RCR07G681JS	RESISTOR, FIXED, COMP	1
30	PAFZZ	81349	RCR07G103JS	RESISTOR, FIXED, COMP	1
31	PAFZZ	13499	382-0038-060	RESISTOR, VARIABLE, N	2
32	PAFZZ	80294	3386P-1-501	RESISTOR, VARIABLE, N	1
33	PAFZZ	81349	RNC55K3011FS	RESISTOR, FIXED, FILM	5
34	PAFZZ	81349	RNC55K1001FS	RESISTOR, FIXED, FILM	3
35	PAFZZ	81349	RN55D1000F	RESISTOR, FIXED, FILM	1
36	PAFZZ	81349	RN55D5901F	RESISTOR, FIXED, FILM	2
37	PAFZZ	81349	RN55D2612F	RESISTOR, FIXED, FILM	1

END OF FIGURE

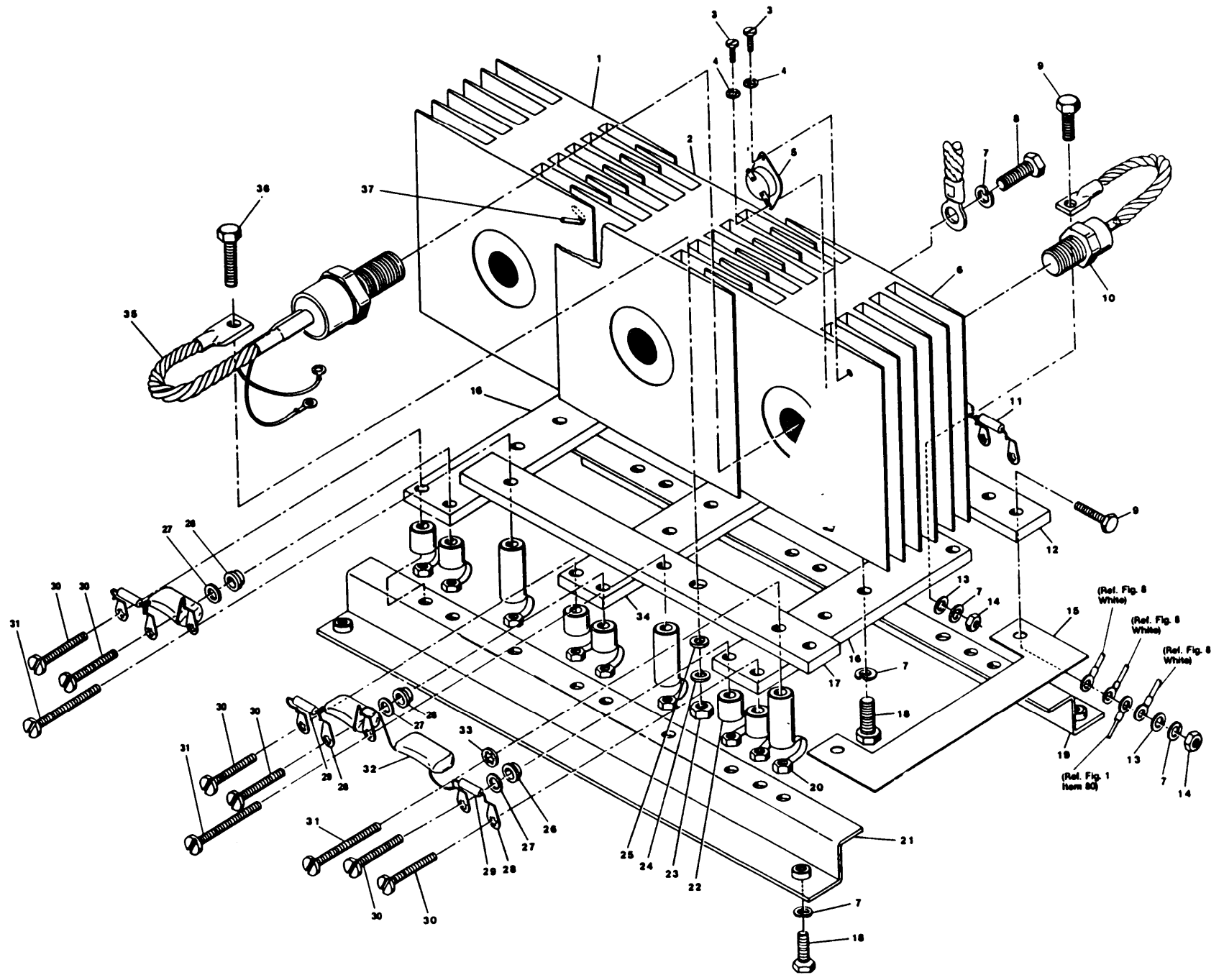


Figure 5. Rectifier Assembly

EL8ZP010

SECTION II		TM11-6130-243-24P-5			
(1)	(2)	(3)	(4)	(5)	(6)
ITEM NO	SMR CODE	FSCM	PART NUMBER	DESCRIPTION AND USABLE ON CODE (UOC)	QTY
GROUP 0103 RECTIFIER ASSEMBLY					
FIG 5					
1	XBFZZ	25778	204939	HEAT SINK	1
2	PAHZZ	25778	204938	HEAT SINK	1
3	PAFZZ	96906	AN936-A3	WASHER, LOCK	2
4	XBFZZ	25778	204938	HEAT SINK	1
5	XBFZZ	02138	SO-250	HEAT SWITCH	1
6	XBFZZ	25778	204937	HEAT SINK	1
7	PAHZZ	96906	MS35338-44	WASHER, LOCK	1
8	PAFZZ	96906	MS35309-2	SCREW MACHINE	3
9	PAFZZ	96906	MS35291-8	SCREW MACHINE	5
10	XBFZZ	58849	R4310	SEMICOND DVD DIODE	3
11	PAFZZ	81349	RCR20G100JS	RESISTOR, FIXED, COMP	3
12	XBFZZ	25778	204943	BUS BAR	1
13	PAFZZ	96906	MS27183-10	WASHER, FLAT	9
14	PAHZZ	96906	MS51967-10	NUT, PLAIN HEX	1
15	XBFZZ	25778	102977	CAPACITOR BD ASSY	1
16	XBFZZ	25778	204944	SUPPORT	2
17	XBFZZ	25778	204942	BUS BAR	1
18	PAFZZ	96906	MS90725-5	SCREW, CAP, HEXAGON H	10
19	XBFZZ	25778	204941	BRACKET	1
20	XBFZZ	95987	NSO-108	SPACER INSULATED	6
21	XBFZZ	25778	204945	BRACKET	1
22	XBFZZ	95987	NSO-38	SPACER INSULATED	12
23	PAFZZ	96906	MS51967-4	NUT, PLAIN, HEXAGON	3
24	PAFZZ	96906	MS35338-45	WASHER, LOCK	3
25	PAFZZ	96906	MS27183-12	WASHER, FLAT	3
26	PAFZZ	83330	2665	WASHER, SHOULDERED	6
27	PAFZZ	96906	MS27183-7	WASHER, FLAT	6
28	XBFZZ	83330	1416-8	TERMINAL, LUG	16
29	PAFZZ	81349	RCR20G510JS	RESISTOR, FIXED, COMP	3
30	PAFZZ	96906	MS35206-249	SCREW, MACHINE	12
31	PAFZZ	96906	MS35223-52	SCREW, MACHINE	6
32	XBFZZ	24138	PMG224K251	CAP FXD FILM	6
33	PAFZZ	96906	MS35333-38	WASHR, LOCK	2
34	XBFZZ	25778	204994	SUPPORT MIDDLE	1
35	XBFZZ	58849	150C10	SCR	3
36	PAFZZ	96906	MS35291-34	SCREW, MACHINE	3
37	PAFZZ	92194	TFT-200/20 NATUR	TEFLON TUBING	3

END OF FIGURE

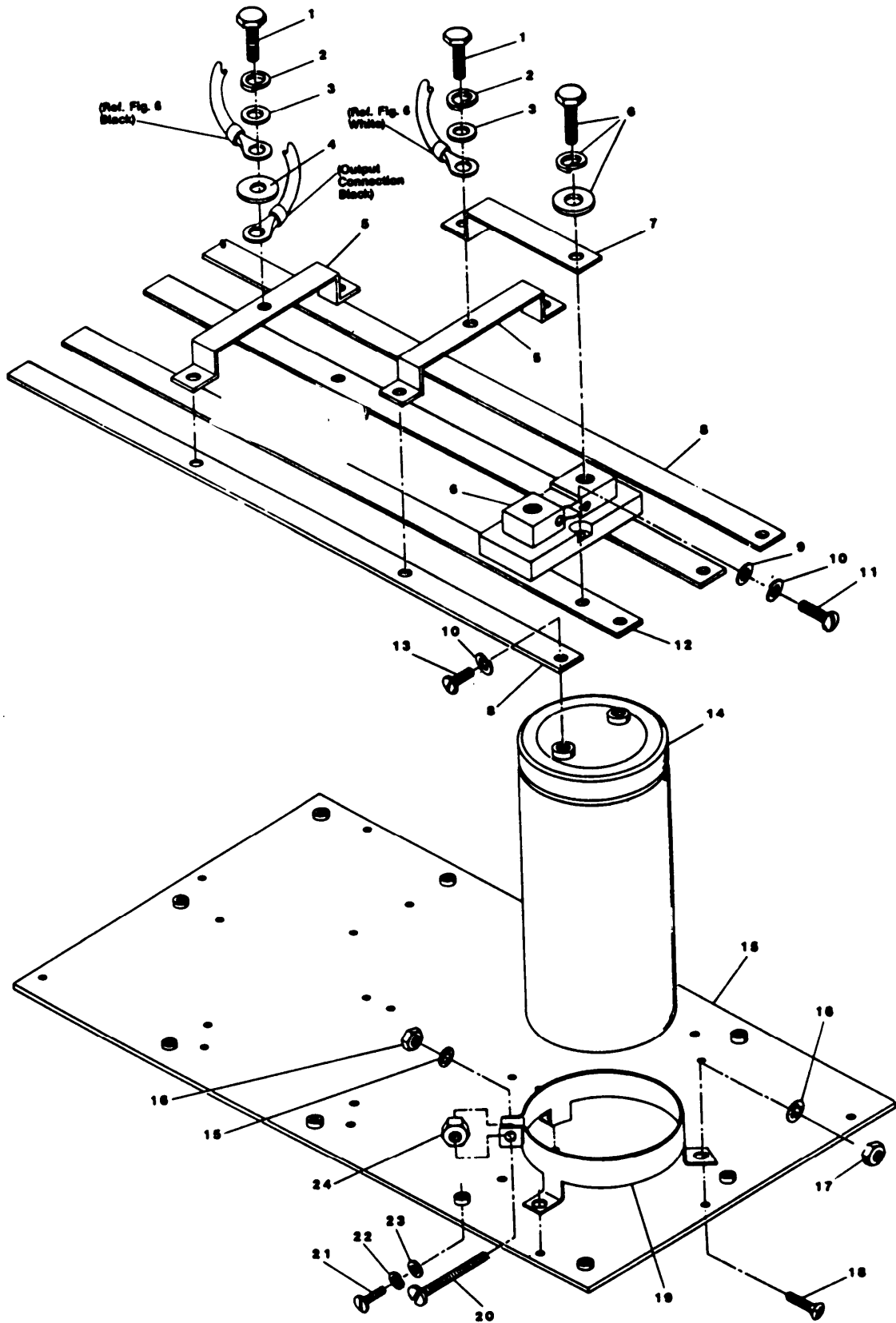


Figure. 6. Capacitor Assembly

EL8ZP012

SECTION II		TM11-6130-243-24P-5			
(1)	(2)	(3)	(4)	(5)	(6)
ITEM NO	SMR CODE	FSCM	PART NUMBER	DESCRIPTION AND USABLE ON CODE (UOC)	QTY
GROUP 0104 CAPACITOR ASSEMBLY					
FIG 6					
1	PAFZZ	96906	MS35291-6	SCREW, MACHINE	2
2	PAFZZ	96906	MS35338-44	WASHER, LOCK	2
3	PAFZZ	96906	MS27183-10	WASHER, FLAT	2
4	PAFZZ	96906	MS15795-910	WASHER, FLAT	1
5	PAFZZ	25778	204950	BUS BAR JUMPER	2
6	PAHZZ	03030	MSB301	AMMETER, SHUNT	1
7	XBFZZ	25778	204951	BUS BAR STRAP	1
8	XBFZZ	25778	204946	BUS BAR	3
9	PAFZZ	96906	NAS620-10L	WASHER FLAT	2
10	PAFZZ	96906	MS35338-138	WASHER LOCK	18
11	PAFZZ	96906	MS35207-264	SCREW, MACHINE	2
12	XBFZZ	25778	204947	SCREW, MACHINE	16
13	PAFZZ	96906	MS35224-62	SCREW, MACHINE	16
14	XBFZZ	80031	86F171M	CAPACIAOT, FIXED	8
15	PAHZZ	80031	204940	CAPICATOR, MTG PLATE	1
16	PAFZZ	96906	MS35333-38	WASHER, LOCK	32
17	PAFZZ	96906	MS35649-282	NET, PLAIN HEX	32
18	PAFZZ	96906	MS35190-252	SCREW, MACHINE	24
19	PAFZZ	37942	VR12	CAPICATOR, CLAMP	8
20	PAFZZ	96906	MS35206-247	SCREW, MACHINE	8
21	PAFZZ	96906	MS51957-46	WASHER, LOCK	10
22	PAFZZ	96906	MS35338-137	WASHER, LOCK	10
23	XBFZZ	96906	MS15795-807	WASHER, FLAT	8
24	XBFZZ	83330	8521	SPACER, SLEEVE	8

END OF FIGURE

NATIONAL STOCK NUMBER AND PART NUMBER INDEX

NATIONAL STOCK NUMBER INDEX

STOCK NUMBER	FIG	ITEM	STOCK NUMBER	FIG	ITEM
5310-00-045-5210	6	4	5975-00-661-0598	2	24
5310-00-050-0458	2	71	5310-00-680-7296	3	7
5305-00-054-5647	3	14		3	17
5305-00-054-5648	2	95	5930-00-681-4394	3	6
5305-00-054-5652	2	88	5905-00-681-6462	4	25
	4	7	5305-00-702-4523	2	14
5305-00-054-6669	2	2	5310-00-732-0558	2	10
5305-00-059-4568	2	68		2	53
5905-00-060-3797	4	35	5961-00-752-6121	4	20
5305-00-068-0501	5	18	5310-00-772-3887	2	64
5310-00-081-4219	5	25	5930-00-800-5770	3	10
5905-00-104-5755	5	11	5310-00-809-4058	5	13
5905-00-105-7764	4	26		6	3
5905-00-105-7768	4	28	5310-00-809-8544	2	41
5905-00-106-3666	4	30		5	27
5905-00-114-0711	4	27	5305-00-822-5853	2	7
5905-00-114-5438	5	29	5961-00-866-5454	4	19
5905-00-135-6046	4	29	5905-00-880-2265	4	36
5940-00-143-4794	3	2	5310-00-880-5978	2	4
5961-00-187-2477	4	15	5305-00-889-3001	2	73
5310-00-193-7577	2	92	5961-00-892-1009	4	17
	3	4	5961-00-925-3777	4	23
	4	5	5310-00-933-8120	6	10
5305-00-207-0763	2	90	5310-00-934-9739	2	91
5961-00-226-8584	4	21		3	5
5325-00-262-5949	2	74		4	4
5905-00-279-3525	4	24	5310-00-934-9747	2	77
5975-00-296-6984	2	54	5310-00-934-9751	2	86
5310-00-407-9566	5	24		3	15
5905-00-432-0381	4	34	5310-00-934-9757	2	42
5905-00-432-9152	4	33		6	17
5325-00-513-9747	2	82	5910-00-947-9434	6	19
5310-00-515-7449	2	16	5961-00-949-1432	4	22
	2	63	5310-00-950-1310	2	97
5935-00-552-7660	4	2		4	6
5310-00-559-0070	2	37	5305-00-957-6266	6	18
	5	33	5305-00-958-5477	2	40
	6	16		3	9
5305-00-576-5417	2	60	5905-00-965-9090	4	37
5310-00-576-5752	2	47	5310-00-983-8483	2	76
	3	16	5305-00-984-4984	2	72
5310-00-579-0079	2	33	5305-00-984-4992	2	84
5310-00-582-5965	5	7	5305-00-984-6194	2	36
	6	2	5305-00-984-6195	6	20
5355-00-616-7669	3	13	5305-00-984-6197	5	30
5305-00-637-4037	2	58	5305-00-989-7435	6	11
5305-00-638-3435	2	34	5305-00-990-6444	2	87
5305-00-639-8065	6	13	5310-00-998-5039	5	26
5905-00-643-5626	3	3	5905-01-016-8580	4	31
5305-00-655-7428	5	31	5961-01-038-6918	4	16

NATIONAL STOCK NUMBER AND PART NUMBER INDEX

NATIONAL STOCK NUMBER INDEX

STOCK NUMBER	FIG	ITEM	STOCK NUMBER	FIG	ITEM
5905-01-040-0405	4	32			
5340-01-095-6880	2	81			
5910-01-117-8134	4	10			
5999-01-158-3005	1	3			
	2	93			

NATIONAL STOCK NUMBER AND PART NUMBER INDEX

PART NUMBER INDEX

FSCM	PART NUMBER	STOCK NUMBER	FIG	ITEM
96906	AN936-A3		5	3
96906	AN960-C416L	5310-00-515-7449	2	16
			2	63
96906	AN960-C616		2	8
			2	51
24138	CD104Z500	5910-01-117-8134	4	10
15235	CGB396	5975-00-296-6984	2	54
82877	CL3L2		2	35
24138	EM103K101		4	13
97539	HE-1070		3	22
81349	JAN1N4148-1	5961-01-038-6918	4	16
81349	JAN1N5611	5961-00-187-2477	4	15
81349	JAN1N753A	5961-00-752-6121	4	20
81349	JAN1N821	5961-00-866-5454	4	19
81349	JAN1N963B	5961-00-892-1009	4	17
81349	JAN2N2219A	5961-00-949-1432	4	22
81349	JAN2N2222	5961-00-226-8584	4	21
81349	JAN2N2907A	5961-00-925-3777	4	23
32171	K3S-DAA-300		3	19
32171	K3S-DVV-040		3	21
27014	LM741		4	8
96906	MS-35206-231	5305-00-889-3001	2	73
03030	MSB301		6	6
96906	MS15795-807	5310-00-880-5978	2	4
			6	23
96906	MS15795-910	5310-00-045-5210	6	4
96906	MS25036-112	5940-00-143-4794	3	2
96906	MS27183-10	5310-00-809-4058	5	13
			6	3
96906	MS27183-12	5310-00-081-4219	5	25
96906	MS27183-4	5310-00-950-1310	2	97
			4	6
96906	MS27183-5	5310-00-983-8483	2	76
96906	MS27183-7	5310-00-809-8544	2	41
			5	27
96906	MS35190-252	5305-00-957-6266	6	18
96906	MS35190-253	5305-00-059-4568	2	68
96906	MS35190-254	5305-00-958-5477	2	40
			3	9
96906	MS35206-232	5305-00-984-4992	2	84
96906	MS35206-246	5305-00-984-6194	2	36
96906	MS35206-247	5305-00-984-6195	6	20
96906	MS35206-249	5305-00-984-6197	5	30
96906	MS35207-261	5305-00-990-6444	2	87
96906	MS35207-264	5305-00-989-7435	6	11
96906	MS35223-25	5305-00-638-3435	2	34
96906	MS35223-27	5305-00-984-4984	2	72
96906	MS35223-28	5305-00-207-0763	2	90
96906	MS35223-52	5305-00-655-7428	5	31
96906	MS35224-62	5305-00-639-8065	6	13
96906	MS35224-63		2	43

NATIONAL STOCK NUMBER AND PART NUMBER INDEX

PART NUMBER INDEX

FSCM	PART NUMBER	STOCK NUMBER	FIG	ITEM
96906	MS35233-86		2	61
96906	MS35291-34		5	36
96906	MS35291-59	5305-00-637-4037	2	58
96906	MS35291-6		6	1
96906	MS35291-8		5	9
96906	MS35307-306	5305-00-702-4523	2	14
96906	MS35307-360	5305-00-576-5417	2	60
96906	MS35307-368	5305-00-822-5853	2	7
96906	MS35309-2		5	8
96906	MS35333-36	5310-00-193-7577	2	92
			3	
			4	5
96906	MS35333-37	5310-00-579-0079	2	33
96906	MS35333-38	5310-00-559-0070	2	37
			5	33
			6	16
96906	MS35333-39	5310-00-576-5752	2	47
			3	16
96906	MS35337-139		2	15
96906	MS35338-137		2	3
			6	22
96906	MS35338-138	5310-00-933-8120	6	10
96906	MS35338-44	5310-00-582-5965	5	7
			6	2
96906	MS35338-45	5310-00-407-9566	5	24
96906	MS35338-46		2	9
			2	52
			3	8
96906	MS35649-242	5310-00-934-9739	2	91
			3	5
			4	4
96906	MS35649-262	5310-00-934-9747	2	77
96906	MS35649-282	5310-00-934-9757	2	42
			6	17
96906	MS35650-302	5310-00-934-9751	2	86
			3	15
96906	MS51957-13	5305-00-054-5647	3	14
96906	MS51957-14	5305-00-054-5648	2	95
96906	MS51957-18	5305-00-054-5652	2	88
			4	7
96906	MS51957-44	5305-00-054-6669	2	2
96906	MS51957-46		6	21
96906	MS51967-1	5310-00-772-3887	2	64
96906	MS51967-10		5	14
96906	MS51967-4		5	23
96906	MS51967-8	5310-00-732-0558	2	10
			2	53
96906	MS90347-13		2	23
96906	MS90725-5	5305-00-068-0501	5	18
96906	MS91528-2D2B	5355-00-616-7669	3	13
76154	M2784		2	55

NATIONAL STOCK NUMBER AND PART NUMBER INDEX

PART NUMBER INDEX

FSCM	PART NUMBER	STOCK NUMBER	FIG	ITEM
81349	M5423-07-01	5930-00-800-5770	3	10
80205	NAS620-10L	5310-00-680-7296	3	7
			3	17
			6	9
95987	NSO-108		5	20
95987	NSO-28		2	38
95987	NSO-38		5	22
97539	N903X 1/4		3	12
97539	N9030X1/4		2	48
24138	PMG224K251		4	9
			5	32
24138	PMG474K251		4	14
81349	RCR07G103JS	5905-00-106-3666	4	30
81349	RCR07G222JS	5905-00-105-7764	4	26
81349	RCR07G472JS	5905-00-114-0711	4	27
81349	RCR07G561JS	5905-00-105-7768	4	28
81349	RCR07G681JS	5905-00-135-6046	4	29
81349	RCR20G100JS	5905-00-104-5755	5	11
81349	RCR20G510JS	5905-00-114-5438	5	29
81349	RC07GF102J	5905-00-681-6462	4	25
81349	RC42GF680J	5905-00-279-3525	4	24
81349	RNC55K1001FS	5905-00-432-0381	4	34
81349	RNC55K3011FS	5905-00-432-9152	4	33
81349	RN55D1000F	5905-00-060-3797	4	35
81349	RN55D2612F	5905-00-965-9090	4	37
81349	RN55D5901F	5905-00-880-2265	4	36
81349	RV4NAYS502A	5905-00-643-5626	3	3
58849	R4310		5	10
09922	SD14-14		2	83
09922	SD14-6		2	39
09922	SE12G10		2	66
09922	SE18N21		2	65
09922	SE22G15		3	18
02138	SO-250		5	5
24138	TDA100M25T		4	12
24138	TDA470M25T		4	11
92194	TFT-200/20 NATUR		5	37
80058	UG-625 B/U	5935-00-552-7660	4	2
37942	VR12	5910-00-947-9434	6	19
09922	YAE18NI		2	56
31781	00-7024-017-1630		2	44
81349	1N961B		4	18
25778	102895	5999-01-158-3005	1	3
			2	93
25778	102976		2	50
25778	102977		5	15
25778	102978		1	4
			2	29
25779	102979		1	5
			2	49
25778	103560		2	69

NATIONAL STOCK NUMBER AND PART NUMBER INDEX

PART NUMBER INDEX

FSCM	PART NUMBER	STOCK NUMBER	FIG	ITEM
25778	103600		1	2
			2	28
06947	141J-1		2	67
83330	1416-8		5	28
58849	150C10		5	35
59730	153		2	26
72619	162-8430-0932-50		2	23
25778	204913		2	22
25778	204937		5	6
25778	204938		5	2
			5	4
25778	204939		5	1
80031	204940		6	15
25778	204941		5	19
25778	204942		5	17
25778	204943		5	12
25778	204944		5	16
25778	204945		5	21
25778	204946		6	8
25778	204947		6	12
25778	204948		2	5
25778	204949		2	59
25778	204950		6	5
25778	204951		6	7
25778	204952		2	17
25778	204953		2	45
25778	204954		2	19
25778	204955		2	62
25778	204956		2	89
25778	204957		2	46
25778	204958		2	94
25778	204959		1	1
			2	25
25778	204960		2	1
25778	204961		3	25
25778	204962		2	13
25778	204963		2	30
25778	204964		2	18
25778	204966		2	27
25778	204973		2	6
25778	204974		2	11
25778	204980		4	1
25778	204994		5	34
25778	205001		2	12
25778	205002		2	31
25778	205003		2	98
25778	205006		3	11
25778	205115		2	96
25778	205122		3	20
83330	2321	5310-00-050-0458	2	71
59730	2547	5975-00-661-0598	2	24

NATIONAL STOCK NUMBER AND PART NUMBER INDEX

PART NUMBER INDEX

FSCM	PART NUMBER	STOCK NUMBER	FIG	ITEM
83330	2665	5310-00-998-5039	5	26
83330	2694	5325-00-513-9747	2	82
44655	270225P46R000J		2	80
81541	299-3-8950-1		3	1
80294	3386P-1-501	5905-01-040-0405	4	32
25778	351287		2	70
25778	361286		3	24
25778	364527		2	21
25778	364528		2	20
13499	382-0038-060	5905-01-016-8580	4	31
82260	6-6		2	57
75382	601-4		2	85
00779	60789-2		4	3
81312	776		2	32
83330	8521		6	24
80031	86F171M		6	14
83330	8941	5340-01-095-6880	2	81
83330	8942		2	78
			2	79
83330	8946		2	75
18876	9062759	5930-00-681-4394	3	6
66717	95900	5325-00-262-5949	2	74

By Order of the Secretary of the Army:

JOHN A. WICKHAM JR.
General, United States Army
Chief of Staff

Official:

DONALD J. DELANDRO
Brigadier General, United States Army
The Adjutant General

D I S T R I B U T I O N:

To be distributed in accordance with DA Form 12-36 literature requirements for PP-460.

*U.S. GOVERNMENT PRINTING OFFICE : 1994 O- 161-846

RECOMMENDED CHANGES TO EQUIPMENT TECHNICAL PUBLICATIONS



THEN... JOT DOWN THE DOPE ABOUT IT ON THIS FORM. CAREFULLY TEAR IT OUT. FOLD IT AND DROP IT IN THE MAIL!

SOMETHING WRONG WITH THIS PUBLICATION?

FROM: (PRINT YOUR UNIT'S COMPLETE ADDRESS)
 Commander
 Stateside Army Depot
 ATTN: AMSTA-US
 Stateside, N.J. 07703-5007

DATE SENT
 10 July 1975

PUBLICATION NUMBER TM 11-5840-340-20P	PUBLICATION DATE 23 Jan 78	PUBLICATION TITLE Radar Set AN/PRC-76
--	-------------------------------	--

BE EXACT. PIN-POINT WHERE IT IS				IN THIS SPACE TELL WHAT IS WRONG AND WHAT SHOULD BE DONE ABOUT IT:
PAGE NO	PARA-GRAPH	FIGURE NO	TAP A	
33				em 2, change the NSN to read: 5835-00-134-9186. Reason: Accuracy.
44		19		Identify the cover on the junction box (item no. 5). Reason: It is a separate item and is not called out on figure 19.
45				Add the cover of the junction box as an item in the listing for figure 19. Reason: Same as above

S A M P L E

PRINTED NAME, GRADE OR TITLE, AND TELEPHONE NUMBER
 SSG I. M. DeSpirit of 999-1776

SIGN HERE

TEAR ALONG PERFORATED LINE

RECOMMENDED CHANGES TO EQUIPMENT TECHNICAL PUBLICATIONS



THEN...JOT DOWN THE DOPE ABOUT IT ON THIS FORM. CAREFULLY TEAR IT OUT, FOLD IT AND DROP IT IN THE MAIL.

SOMETHING WRONG WITH THIS PUBLICATION?

FROM: (PRINT YOUR UNIT'S COMPLETE ADDRESS)

DATE SENT

PUBLICATION NUMBER
TM 11-6130-243-24P-5

PUBLICATION DATE
6 Sept 1985

PUBLICATION TITLE
Power Supply PP-4606E/G

BE EXACT PIN-POINT WHERE IT IS

PAGE NO.	PARA-GRAPH	FIGURE NO.	TAB. NO.

IN THIS SPACE TELL WHAT IS WRONG AND WHAT SHOULD BE DONE ABOUT IT:

TEAR ALONG PERFORATED LINE

PRINTED NAME GRADE OR TITLE AND TELEPHONE NUMBER

SIGN HERE

DA FORM 2028-2
1 JUL 79

PREVIOUS EDITIONS ARE OBSOLETE

P.S.--IF YOUR OUTFIT WANTS TO KNOW ABOUT YOUR RECOMMENDATION MAKE A CARBON COPE OF THIS AND GIVE IT TO YOUR HEADQUARTERS.

FILL IN YOUR
UNIT'S ADDRESS

FOLD BACK

DEPARTMENT OF THE ARMY

OFFICIAL BUSINESS

Commander
US Army Communications-Electronics Command
and Fort Monmouth
ATTN: AMSEL-ME-MP
Fort Monmouth, New Jersey 07703-5007

TEAR ALONG PERFORATED LINE

THE METRIC SYSTEM AND EQUIVALENTS

WEIGHT MEASURE

1 Centimeter = 10 Millimeters = 0.01 Meters = 0.3937 Inches
 1 Meter = 100 Centimeters = 1000 Millimeters = 39.37 Inches
 1 Kilometer = 1000 Meters = 0.621 Miles

WEIGHTS

1 Gram = 0.001 Kilograms = 1000 Milligrams = 0.035 Ounces
 1 Kilogram = 1000 Grams = 2.2 lb.
 1 Metric Ton = 1000 Kilograms = 1 Megagram = 1.1 Short Tons

LIQUID MEASURE

1 Milliliter = 0.001 Liters = 0.0338 Fluid Ounces
 1 Liter = 1000 Milliliters = 33.82 Fluid Ounces

SQUARE MEASURE

1 Sq. Centimeter = 100 Sq. Millimeters = 0.155 Sq. Inches
 1 Sq. Meter = 10,000 Sq. Centimeters = 10.76 Sq. Feet
 1 Sq. Kilometer = 1,000,000 Sq. Meters = 0.386 Sq. Miles

CUBIC MEASURE

1 Cu. Centimeter = 1000 Cu. Millimeters = 0.06 Cu. Inches
 1 Cu. Meter = 1,000,000 Cu. Centimeters = 35.31 Cu. Feet

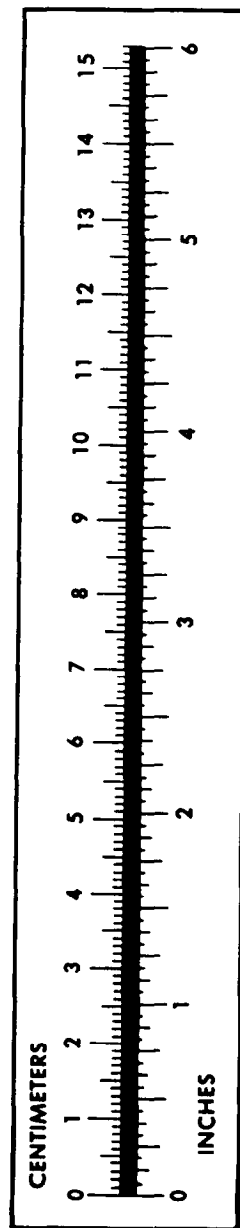
TEMPERATURE

$5/9(^{\circ}\text{F} - 32) = ^{\circ}\text{C}$
 212° Fahrenheit is equivalent to 100° Celsius
 90° Fahrenheit is equivalent to 32.2° Celsius
 32° Fahrenheit is equivalent to 0° Celsius
 $9/5^{\circ}\text{C} + 32 = ^{\circ}\text{F}$

APPROXIMATE CONVERSION FACTORS

TO CHANGE	TO	MULTIPLY BY
Inches	Centimeters	2.540
Feet	Meters	0.305
Yards	Meters	0.914
Miles	Kilometers	1.609
Square Inches	Square Centimeters	6.451
Square Feet	Square Meters	0.093
Square Yards	Square Meters	0.836
Square Miles	Square Kilometers	2.590
Acres	Square Hectometers	0.405
Cubic Feet	Cubic Meters	0.028
Cubic Yards	Cubic Meters	0.765
Fluid Ounces	Milliliters	29.573
its	Liters	0.473
arts	Liters	0.946
allons	Liters	3.785
Ounces	Grams	28.349
Pounds	Kilograms	0.454
Short Tons	Metric Tons	0.907
Pound-Feet	Newton-Meters	1.356
Pounds per Square Inch	Kilopascals	6.895
Miles per Gallon	Kilometers per Liter	0.425
Miles per Hour	Kilometers per Hour	1.609

TO CHANGE	TO	MULTIPLY BY
Centimeters	Inches	0.394
Meters	Feet	3.280
Meters	Yards	1.094
Kilometers	Miles	0.621
Square Centimeters	Square Inches	0.155
Square Meters	Square Feet	10.764
Square Meters	Square Yards	1.196
Square Kilometers	Square Miles	0.386
Square Hectometers	Acres	2.471
Cubic Meters	Cubic Feet	35.315
Cubic Meters	Cubic Yards	1.308
Milliliters	Fluid Ounces	0.034
Liters	Pints	2.113
Liters	Quarts	1.057
ers	Gallons	0.264
ms	Ounces	0.035
ograms	Pounds	2.205
Metric Tons	Short Tons	1.102
Newton-Meters	Pounds-Feet	0.738
Kilopascals	Pounds per Square Inch	0.145
ometers per Liter	Miles per Gallon	2.354
ometers per Hour	Miles per Hour	0.621



PIN: 058447-000